



Belgrave Village

LUXURY CITY CENTRE

ONE & TWO BEDROOM APARTMENTS

Galliard Homes

Over the years, Galliard Homes has become a byword for regeneration, rejuvenation and reinvention. Since the business was founded over 30 years ago, we have built our reputation on acquiring sites in areas where there was little or no development – but great potential.

As a result of our forward-looking site acquisition policies and judicious identification of areas with outstanding possibilities, our investors have shared in our good fortune and experienced huge capital growth. Galliard locales, once unused, under-developed and with limited possibilities, have proved to be outstanding locations in which to own property, to live and to experience.



Wavensmere Homes

Wavensmere Homes' passion for authenticity is what makes us unique.

Over the past seventeen years, we have specialised in urban regeneration and unique placemaking renovation projects in extraordinary sites and developments that have allowed us to reinstate classic architecture back to its former glory.

Due to our rich and experienced background in traditional craftsmanship, we understand the importance of detail and quality. Our diverse team successfully restores, revives and transforms underutilised land into environments underpinned by their communities to create a sense of place for future generations.



WAVENSHERE
HOMES

Apsley House

Formed in 2014, Apsley House Capital PLC is a specialist developer of residential and mixed-use schemes, focusing on major UK cities such as Birmingham, Bristol and non-prime areas of London.

Our aim is simple, to promote urban living by expanding and regenerating city cores.

With 1,150 homes under construction in Birmingham city, through the Galliard Apsley Partnership and a further 1,350 due to start in 2022, Apsley House Capital PLC is one of the region's leading brownfield developers with a development portfolio of £500m.

APSLEY HOUSE
CAPITAL PLC

Delivering Luxury Lifestyles

Wavensmere Homes and The Galliard Apsley Partnership are delighted to work together in a joint venture to develop Belgrave Village.

Belgrave Village in Birmingham delivers a wide variety of home choices for first-time buyers and families alike, offering purchasers the opportunity to enjoy all that this area has to offer.









Belgrave Village

Located off Belgrave Middleway, you will find a thriving community called Belgrave Village.

Occupying a site that had stood vacant for over 20 years, this development is an exciting contribution to Birmingham city centre.

Just moments away from Birmingham's thriving commercial centre, New Street Station and Grand Central shopping centre, Belgrave Village is a landmark development providing 438 city centre homes in a combination of one and two-bedroom apartments and two, three and four-bedroom houses.

Nestled amid stunning areas of gardens, parkland and shared open spaces, it'll be easy to forget you're so centrally located.





Library of Birmingham, Centenary Square

The Bright Future

A CITY OF TRANSFORMATION

Birmingham's framework of six economic growth zones will attract a £1.5 billion investment programme generating some 1.8 million square metres of new floor space and create around 50,000 new jobs.

By 2031, Birmingham will have undergone a transformational change that will see substantial economic growth furthering its dynamic presence on the international stage. The six economic zones provide the stimulus for clustering economic activity within high quality business environments, each accelerating the delivery of growth to benefit the city.





BRINDLEY PLACE
🍴

LIBRARY OF BIRMINGHAM
📖

THE MAILBOX
📧

SYMPHONY HALL
🎵

02 ACADEMY
🏠

HIPPODROME THEATRE
🎭

CHINESE QUARTER
🏮

BULLRING & GRAND CENTRAL STATION
🚆

MOOR STREET
🚆

COACH STATION
🚌

CUSTARD FACTORY
🏭



Birmingham is Growing. That's a Fact

- Today, Birmingham is a city of outstanding statistics with a regional economy of £102 billion. It is also a city setting an exceptional benchmark for a quality lifestyle – with the cost of living some 60% lower than in London.
- Birmingham is the youngest city in Europe with the under 30's accounting for nearly 46% of its population.
- With one of the UK's top 20 universities at the heart of the city, there are 84,000 students currently living and studying in Birmingham's eight universities. Each drawn to the city's vibrancy, affordability and culture.
- The Big City Plan is a 20-year City Centre Masterplan that sees a contribution of £2.1 billion to the economy each year, creating over 50,000 new jobs, 65,000 square metres of new and improved public spaces, 28 kilometres of enhanced walking and cycling routes, 5,000 new homes with new leisure and recreational facilities to attract more families.
- JLL research suggests that rental prices in Birmingham could increase by 12% over the next five years – the highest level of growth in the country. Rental yields are forecasted to average 6.56%.
- A 1 hour commute to London, Manchester, Leeds, Sheffield, York. Curzon Street Station, the new Phase 1 terminus of HS2 (High Speed 2) is just 10 minutes from Belgrave Village. Passengers will enjoy an incredible 45 minutes commute to London Euston and just 41 minutes to Manchester Piccadilly. Property investors are also set to reap the benefits of HS2 with increases to property values around the area.

£102 billion

Regional economy

£14 billion

Additional economic output generated by HS2

52%

Capital growth in the last 10 years

£778 million

Investment for the 2022 Commonwealth Games

£8 billion

20 years regeneration for Birmingham City Centre



The Heartbeat of Culture

The second largest city in the UK, Birmingham is the beating heart of the country.

A hotbed of culture, this is a city that is packed with history, arts and creativity. Its rich industrial past can be felt throughout the area with its world-class architecture and intricate network of canals.

The Birmingham Museum & Art Gallery (BMAG), located on Chamberlain Square, is home to 40 galleries where you can explore significant art, social history, archaeology and ethnography.

Birmingham city centre is home to many world class theatre production venues including The Alexandra, The Old Rep and Birmingham Hippodrome. Other cultural institutions include The Royal Birmingham Society of Artists, The Midlands Art Centre and Birmingham's Symphony Hall. All of which host some of the world's finest programme of performances.

Just five minutes from New Street Station, you'll find Birmingham's Chinese Quarter. A cornucopia of Chinese, Japanese and Korean eateries and food stores line its colourful, vibrant streets, all centred around the area's landmark stone pagoda.





Parks & Leisure

This city is actually greener than you might think. The Greater Birmingham area has protected over 8,000 acres of some of the finest parkland in the UK.

Maintaining these pockets of the natural environment offers a huge benefit to the urban area creating exciting places to socialise, relax and interact with nature a stone's throw from the bustle of city living.

Birmingham Botanical Gardens

Birmingham Botanical Gardens and Glasshouses covers 15 glorious landscaped gardens that is home to over 7,000 plants, shrubs and trees. Located in Edgbaston, the tranquil setting also has four glasshouses flourished with tropical rainforest and rich vegetation.

Cannon Hill Park

Located just outside Birmingham city centre, Cannon Hill Park offers 80 acres of parkland as well as 120 acres of conservation and woodland. Cannon Hill Park is packed with adventure for the family from rides and games to arts and entertainment all year round.

Eastside City Park

Covering 6.75 acres in the heart of the city, Eastside City Park is Birmingham's first new urban park in 130 years. The park doubles the amount of open space in the city offering 300 trees, grass, shrubs, water and more for the community to use and enjoy. It is the largest single piece of public realm in Birmingham city centre.

Sutton Park

Located in Sutton Coldfield, Sutton Park is a 2,400 acre National Nature Reserve that is one of Europe's largest urban parks. The stunning parkland offers open heathland, marshland and seven lakes, as well as a variety of plants and wildlife. The park also offers activities, cycle routes, nature and heritage trails and more.



Let's Talk Shop

Birmingham is a shopper's paradise. Whether you seek head turning chic or eye catching value it's all here.

With Selfridges, Marks & Spencer, Flannels, House of Fraser and Harvey Nichols all within easy walking distance of each other, it's no surprise that Birmingham is gaining a reputation as the region's premier location for retail therapy.

Selfridges & The Bullring

For those who love make-up, fragrances and the latest in skin and haircare products, the Selfridges Beauty Hall is a place of wonder. Favourites like MAC, Urban Decay, Chanel and YSL sit alongside high-end Japanese offerings from Suqqu and RMK as well as cult UK brand Charlotte Tilbury. There are products from around the world in the Beauty Workshop, and regular beauty events are held where you can shop over a glass of fizz.

The Mailbox

The Mailbox is a luxury shopping mall converted from a former Royal Mail sorting office. Inside you'll find premium labels for both men and women from the likes of Paul Smith and Gieves & Hawkes. Pop into the new concept Harvey Nichols, where you can either browse designer-named fashions or relax in one of the opulent personal shopping suites whilst a stylist does the hard work for you! You can also refuel at one of the canalside restaurants and bars or catch a movie in comfort on one of the Everyman Cinema's sofas.

Grand Central

Visit Grand Central for the ultimate shopping and dining experience at the likes of L'Occitane, MAC Cosmetics and more. Stop for a bite to eat at one of many pop up restaurants and market style stores from mouth watering tapas to on the go pizza. Grand Central is fast becoming the most popular place to visit in Birmingham city centre.





The Mailbox, Birmingham



Eat, Drink & Be Merry

Birmingham's food and drink culture has also seen rapid expansion in recent years.

Whether you're a fanatical foodie out for fine dining or looking for a quick fix to carry on exploring, Birmingham is never out of options. The city is home to restaurants serving over 27 different cuisines from around the world, as well as a variety of cocktail bars. Birmingham is also very privileged to host five Michelin-starred restaurants right on its doorstep, in fact the city has more than any other UK city outside of London. Ranging from the high-profile Purnells the world-renowned Adams, the city boasts something for everyone's taste buds.

Highly recommended restaurants such as Dishoom, The Ivy and Tattu, all taking pride of place in the centre of Birmingham, have taken the city by storm in recent years.



Be Connected

Go for a stroll

Calthorpe Park	6 mins
Highgate Park	12 mins
Balti Triangle	15 mins
Chinese Quarter	16 mins
O2 Academy	17 mins
Edgbaston Stadium	21 mins

Take a drive

Alexandra Theatre	5 mins
Five Ways Station	4 mins
The Mailbox	6 mins
Moor Street Station	7 mins
Bull Ring	7 mins
Selfridges	7 mins

Jump on a train

London Euston	1hr 21 mins
Coventry	33 mins
Milton Keynes Central	48 mins
Bristol Temple Meads	1hr 31 mins
Liverpool Lime Street	1hr 34 mins
Cardiff Central	2 hrs

By road

Birmingham is strategically located for motorway travel with the M5, M6, M40 and M42 all interconnecting in and around the city. The commute by car into London is around 116 miles, or just over 2 hours on average. Drive times across the Midlands are impressive with a typical journey time of 30 minutes to Coventry, 55 minutes to Leicester and 60 minutes to Nottingham.

By rail

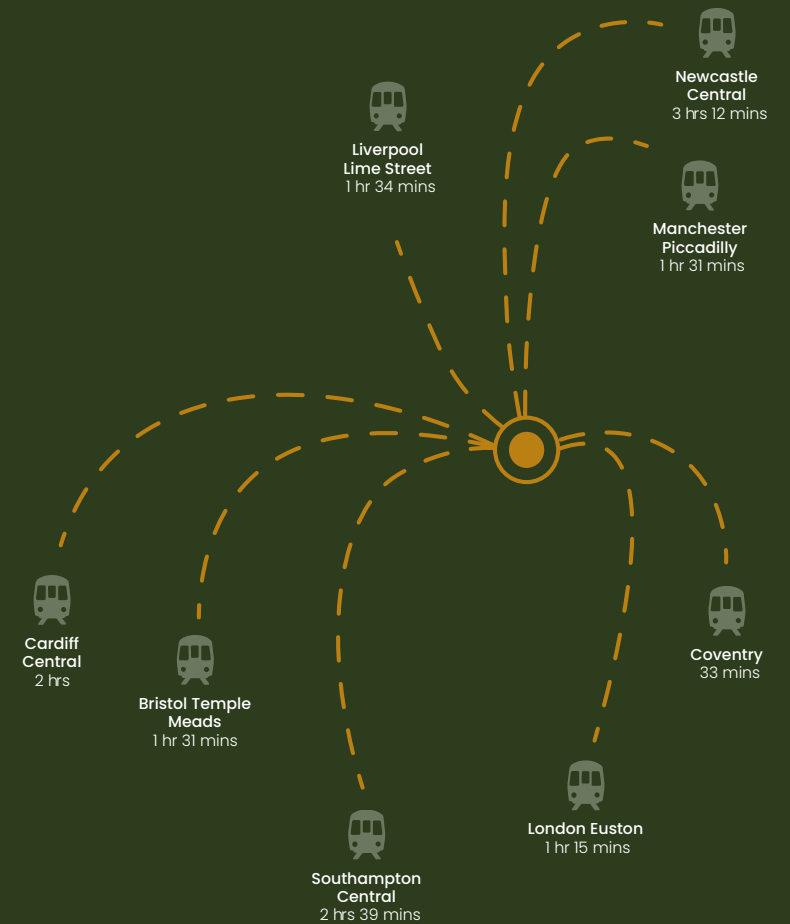
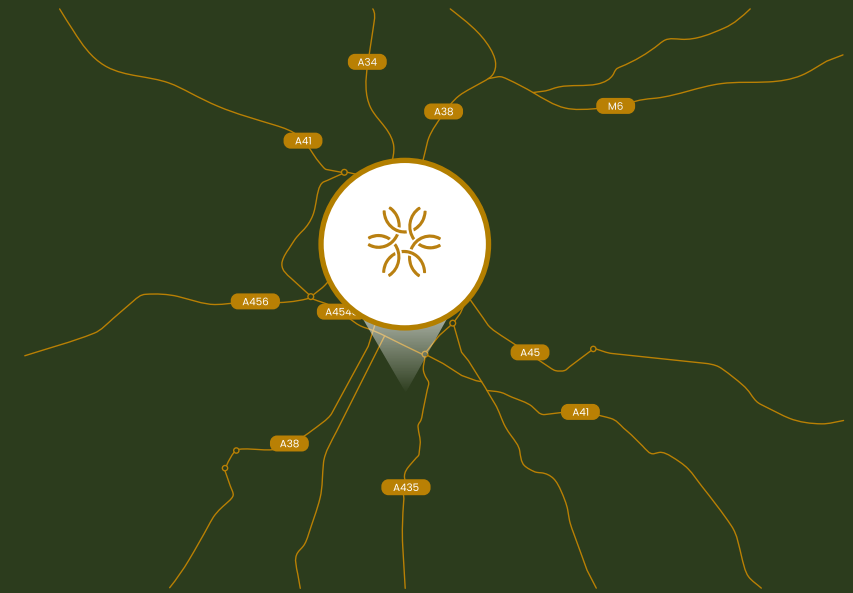
New Street, Snow Hill and Moor Street are the three main rail stations that provide a comprehensive network linking destinations across the UK. The £55 billion development of HS2 will slash current rail journey times to and from London by an anticipated 37 minutes and from Leeds by 50 minutes.

By air

Birmingham International Airport is just 20 minutes from the city centre, enabling domestic and international air travel with ease and convenience. Destinations cover Europe, the Middle East, the Indian sub-continent, North America and the Caribbean.

By tram

West Midlands Metro links Wolverhampton St. George's to the city centre. The ongoing £1.3 billion extension will increase the number of stations to 80 connecting Wolverhampton, Birmingham, North Solihull, the NEC, HS2 and Birmingham Airport.







**Belgrave
Village**



Site Amenities

Residents of Belgrave Village can benefit from living within a green oasis whilst being in close proximity to Birmingham city centre. The development also offers an indoor gym, screening room and co-working space for residents to enjoy.

GYM

Stay active in the fully equipped on-site gym available to all residents to enjoy. Placed within the apartment buildings, the gymnasium will have dedicated areas to work out including weights, training and open space.

CO-WORKING SPACE

Belgrave Village residents can benefit from on site co-working space that complements the new hybrid way of working.

SCREENING ROOM

Bring your friends and family together by hiring the screening room to watch your favourite films and shows on a big screen.

GREEN SPACE

Belgrave Village will be a green oasis whilst enjoying everything a city has to offer. The dwellings are designed around courtyard gardens, landscaped public realm and a linear park.

CONCIERGE SERVICES

Belgrave Village will provide first-class concierge services that offer round the clock security, visitor management, postal management and more. They will be your first point of call for your day to day needs.



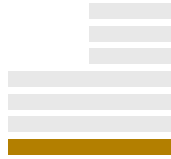



Belgrave
Village



The Blossom

Ground Floor



Type A Apartment

16

Kitchen/Diner/Living room:
5.313m x 3.832m
(17' 5" x 12' 6")

Bedroom:
2.773m x 3.713m
(9' 1" x 12' 3")

Type B Apartment

17

Kitchen/Diner/Living room:
4.635m x 5.084m
(15' 2" x 16' 8")

Bedroom 1:
4.624m x 2.449m
(15' 2" x 8")

Bedroom 2:
3.611m x 2.311m
(11' 10" x 7' 6")

Type C Apartment

4, 5, 7, 8, 9, 10, 12, 13, 14, 15

Kitchen/Diner/Living room:
5.312m max x 3.946m max
(17' 5" max x 12' 11" max)

Bedroom:
4.077m x 2.254m
(13' 4" x 7' 4")

Type D2 Apartment

18

Kitchen/Diner/Living room:
6.840m max x 3.779m max
(22' 5" max x 12' 4" max)

Bedroom 1:
3.522m max x 3.120m
(11' 6" max x 10' 2")

Bedroom 2:
3.358m x 2.430m
(11' 0" x 7' 11")

Type F Apartment

1

Kitchen/Diner/Living room:
4.251m max x 5.656m max
(13' 11" max x 18' 6" max)

Bedroom 1:
3.409m x 3.323m
(11' 2" x 10' 10")

Bedroom 2:
2.471m x 3.294m
(8' 1" x 10' 9")

Type G Apartment

2

Kitchen/Diner/Living room:
4.252m max x 5.654m max
(13' 11" x 18' 6")

Bedroom 1:
3.091m x 3.324m
(10' 1" x 10' 10")

Bedroom 2:
3.322m x 2.511m
(10' 10" x 8' 2")



Type H Apartment

3

Kitchen/Diner/Living room:
6.172m max x 4.113m max
(20' 2" max x 13' 5" max)

Bedroom 1:
3.963m max x 3.283m max
(13' max x 10' 9" max)

Bedroom 2:
2.709m x 2.874m max
(8' 10" x 9' 5" max)

Type I Apartment

6, 11

Kitchen/Diner/Living room:
4.956m max x 3.582m max
(16' 3" max x 11' 9" max)

Bedroom:
3.629m x 3.218m
(11' 10" x 10' 6")

Type J Apartment

19, 20

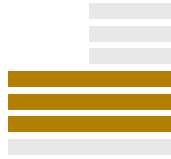
Kitchen/Diner/Living room:
6.501m max x 3.421m max
(21' 3" max x 11' 2" max)

Bedroom:
3.407m max x 2.692m max
(11' 2" max x 8' 9" max)

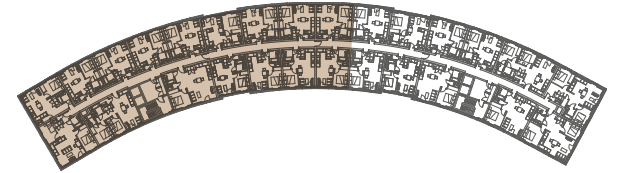


The Blossom

Floors 1 - 3



Please note that all plot numbers are applicable across floors 1-3



Type A Apartment

17

Kitchen/Diner/Living room:
5.313m x 3.832m
(17' 5" x 12' 6")

Bedroom:
2.773m x 3.713m
(9' 1" x 12' 3")

Type B Apartment

18

Kitchen/Diner/Living room:
4.635m x 5.084m
(15' 2" x 16' 8")

Bedroom 1:
4.624m x 2.449m
(15' 2" x 8")

Bedroom 2:
3.611m x 2.311m
(11' 10" x 7' 6")

Type C Apartment

5, 6, 8, 9, 10, 11, 13, 14, 15, 16

Kitchen/Diner/Living room:
5.312m max x 3.946m max
(17' 5" max x 12' 11" max)

Bedroom:
4.077m x 2.254m
(13' 4" x 7' 4")

Type D Apartment

19

Kitchen/Diner/Living room:
6.84m max x 3.779m max
(22' 5" max x 12' 4" max)

Bedroom 1:
3.522m max x 3.12m
(11' 6" max x 10' 2")

Bedroom 2:
3.358m x 2.43m
(11' x 7' 11")

Type E Apartment

1, 27

Kitchen/Diner/Living room:
6.807m max x 4.177m max
(22' 3" max x 13' 8" max)

Bedroom:
3.753m max x 3.172m max
(12' 3" max x 10' 4" max)

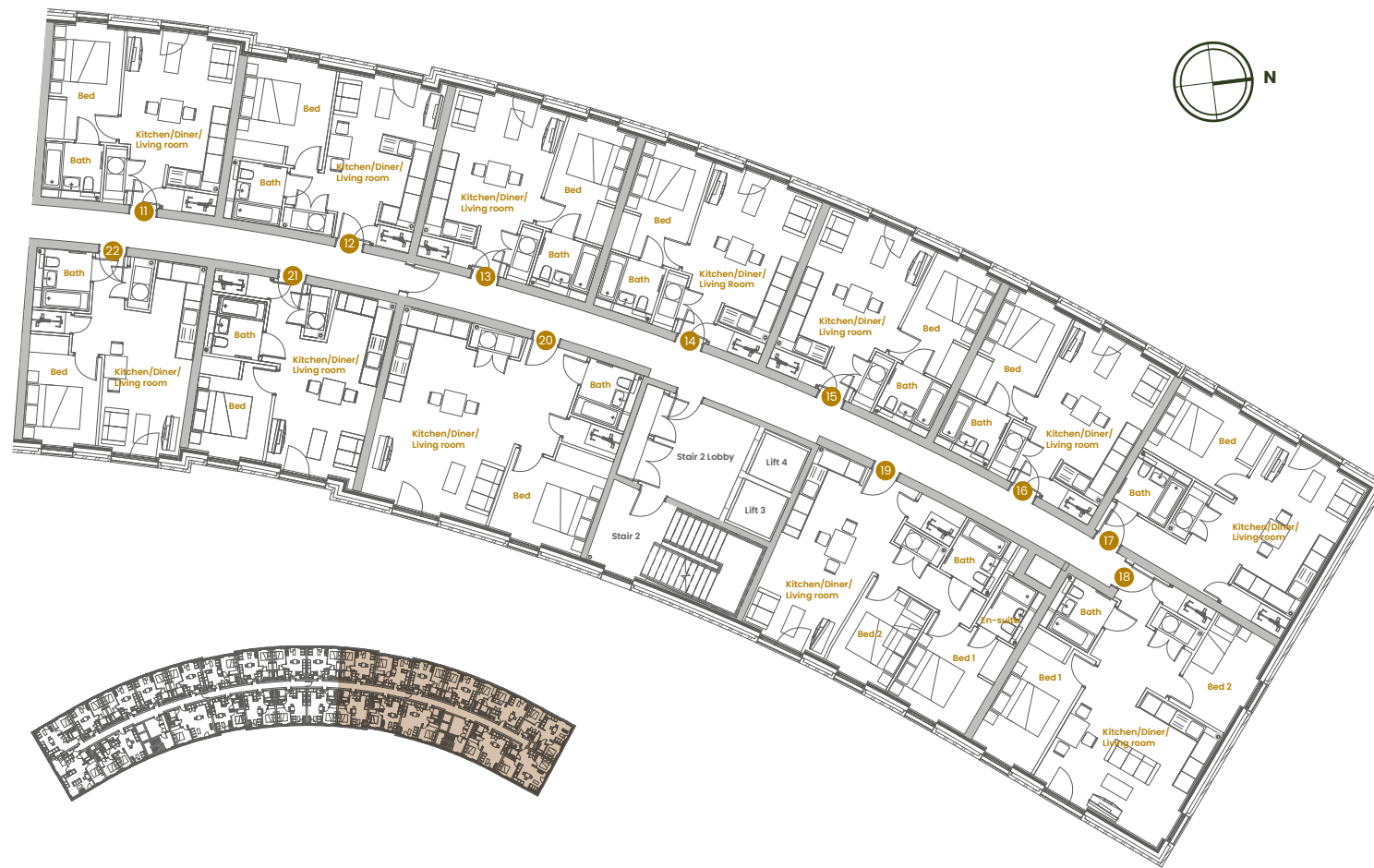
Type F Apartment

2

Kitchen/Diner/Living room:
4.251m max x 5.656m max
(13' 11" max x 18' 6" max)

Bedroom 1:
3.409m x 3.323m
(11' 2" x 10' 10")

Bedroom 2:
2.471m x 3.294m
(8' 1" x 10' 9")



Type G Apartment

3

Kitchen/Diner/Living room:
4.252m max x 5.654m max
(13' 11" x 18' 6")

Bedroom 1:
3.091m x 3.324m
(10' 1" x 10' 10")

Bedroom 2:
3.322m x 2.511m
(10' 10" x 8' 2")

Type H Apartment

4

Kitchen/Diner/Living room:
6.172m max x 4.113m max
(20' 2" max x 13' 5" max)

Bedroom 1:
3.963m max x 3.283m max
(13' max x 10' 9" max)

Bedroom 2:
2.709m x 2.874m max
(8' 10" x 9' 5" max)

Type I Apartment

7, 12

Kitchen/Diner/Living room:
4.956m max x 3.582m max
(16' 3" max x 11' 9" max)

Bedroom:
3.629m x 3.218m
(11' 10" x 10' 6")

Type J Apartment

21, 26

Kitchen/Diner/Living room:
6.501m max x 3.421m max
(21' 3" max x 11' 2" max)

Bedroom:
3.407m max x 2.692m max
(11' 2" max x 8' 9" max)

Type M Apartment

22, 23, 24, 25

Kitchen/Diner/Living room:
6.836m max x 3.064m max
(22' 5" max x 10' max)

Bedroom:
3.754m max x 2.609m
(12' 3" max x 8' 6")

Type U Apartment

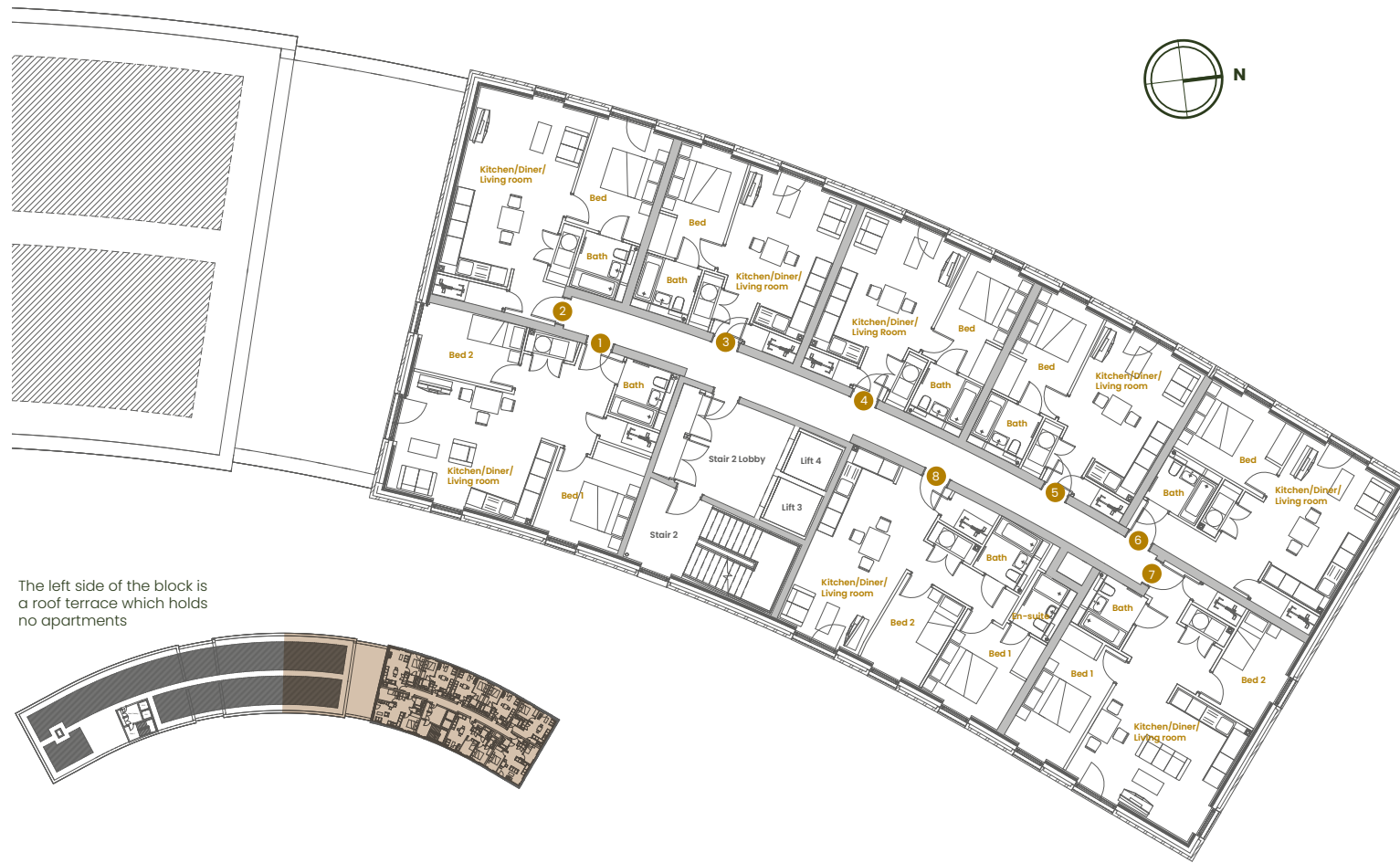
20

Kitchen/Diner/Living room:
6.839m max x 4.885m max
(22' 5" max x 16' max)

Bedroom:
3.588m max x 3.466m
(11' 9" max x 11' 4")

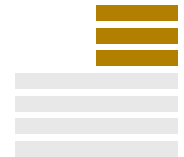






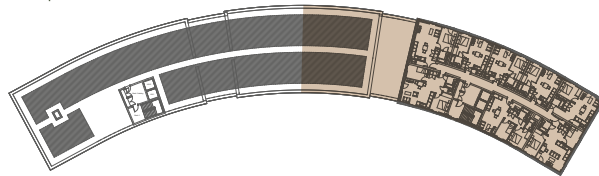
The Blossom

Floors 4 - 6



Please note that all plot numbers are applicable across floors 4-6

The left side of the block is a roof terrace which holds no apartments



Type A Apartment

6

Kitchen/Diner/Living room:

5.313m x 3.832m
(17' 5" x 12' 6")

Bedroom:

2.773m x 3.713m
(9' 1" x 12' 3")

Type B Apartment

7

Kitchen/Diner/Living room:

4.635m x 5.084m
(15' 2" x 16' 8")

Bedroom 1:

4.624m x 2.449m
(15' 2" x 8')

Bedroom 2:

3.611m x 2.311m
(11' 10" x 7' 6")

Type C Apartment

3, 4, 5

Kitchen/Diner/Living room:

5.312m max x 3.946m max
(17' 5" max x 12' 11" max)

Bedroom:

4.077m x 2.254m
(13' 4" x 7' 4")

Type D Apartment

8

Kitchen/Diner/Living room:

6.84m max x 3.779m max
(22' 5" max x 12' 4" max)

Bedroom 1:

3.522m max x 3.12m
(11' 6" max x 10' 2")

Bedroom 2:

3.358m x 2.43m
(11' x 7' 11")

Type K Apartment

2

Kitchen/Diner/Living room:

6.837m x 4.211m
(22' 5" x 13' 9")

Bedroom:

3.977m max x 2.85m
(13' max x 9' 4")

Type T Apartment

1

Kitchen/Diner/Living room:

4.313m max x 5.598m max
(14' 1" max x 18' 4" max)

Bedroom 1:

3.612m max x 3.232m max
(11' 10" max x 10' 7" max)

Bedroom 2:

2.45m x 3.684m
(8' x 12' 1")



The Bluebell

Ground Floor



Type C Apartment

3, 4, 5, 6

Kitchen/Diner/Living room:
5.312m max x 3.946m max
(17' 5" max x 12' 11" max)

Bedroom:
4.077m x 2.254m
(13' 4" x 7' 4")

Type L Apartment

9

Kitchen/Diner/Living room:
4.981m max x 5.286m max
(16' 4" max x 17' 4" max)

Bedroom 1:
2.609m x 4.38m
(8' 6" x 14' 4")

Bedroom 2:
1.919m x 3.421m
(6' 3" x 11' 2")

Type N Apartment

10

Kitchen/Diner/Living room:
3.808m max x 6.215m max
(12' 5" max x 20' 4" max)

Bedroom 1:
3.011m x 3.602m
(9' 10" x 11' 9")

Bedroom 2:
3.337m x 3.228m max
(10' 11" x 10' 7" max)

Type O Apartment

1

Kitchen/Diner/Living room:
5.999m max x 5.448m max
(19' 8" max x 17' 10" max)

Bedroom 1:
4.278m max x 2.625m max
(14' max x 8' 7" max)

Bedroom 2:
2.9m max x 3.605m max
(9' 6" max x 11' 9" max)



Type P Apartment

2

Kitchen/Diner/Living room:
6.181m max x 3.677m max
(20' 3" max x 12' max)

Bedroom 1:
2.804m max x 3.719m max
(9' 2" max x 12' 2" max)

Bedroom 2:
2.745m max x 2.475m max
(9' max x 8' 1" max)

Type S2 Apartment

8

Kitchen/Diner/Living room:
6.177m max x 4.005m max
(20' 3" max x 13' 1" max)

Bedroom 1:
3.973m max x 3.217m max
(13' 0" max x 10' 6")

Bedroom 2:
3.020m max x 2.770m max
(9' 10" max x 9' 1" max)

Type V Apartment

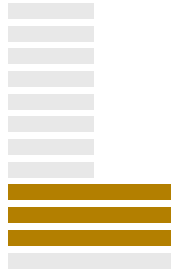
7

Kitchen/Diner/Living room:
6.171m max x 4.805m max
(20' 2" max x 15' 9" max)

Bedroom:
3.112m max x 3.452m max
(10' 2" max x 11' 3" max)

The Bluebell

Floors 1 - 3



Please note that all plot numbers are applicable across floors 1-3



Type C Apartment

4, 5, 6, 9

Kitchen/Diner/Living room:
5.312m max x 3.946m max
(17' 5" max x 12' 11" max)

Bedroom:
4.077m x 2.254m
(13' 4" x 7' 4")

Type Cl Apartment

7

Kitchen/Diner/Living room:
5.312m max x 4.570m max
(17' 5" max x 14' 11" max)

Bedroom:
4.077m x 2.623m
(13' 4" x 8' 7")

Type I Apartment

8

Kitchen/Diner/Living room:
4.956m max x 3.582m max
(16' 3" max x 11' 9" max)

Bedroom:
3.629m x 3.218m
(11' 10" x 10' 6")

Type J Apartment

17

Kitchen/Diner/Living room:
6.501m max x 3.421m max
(21' 3" max x 11' 2" max)

Bedroom:
3.407m max x 2.692m max
(11' 2" max x 8' 9" max)

Type L Apartment

12

Kitchen/Diner/Living room:
4.981m max x 5.286m max
(16' 4" max x 17' 4" max)

Bedroom 1:
2.609m x 4.38m
(8' 6" x 14' 4")

Bedroom 2:
1.919m x 3.421m
(6' 3" x 11' 2")

Type M Apartment

1, 14, 15, 16, 19

Kitchen/Diner/Living room:
6.836m max x 3.064m max
(22' 5" max x 10' max)

Bedroom:
3.754m max x 2.609m
(12' 3" max x 8' 6")



Type N Apartment

13

Kitchen/Diner/Living room:
3.808m max x 6.215m max
(12' 5" max x 20' 4" max)

Bedroom 1:
3.011m x 3.602m
(9' 10" x 11' 9")

Bedroom 2:
3.337m x 3.228m max
(10' 11" x 10' 7" max)

Type O Apartment

2

Kitchen/Diner/Living room:
5.999m max x 5.448m max
(19' 8" max x 17' 10" max)

Bedroom 1:
4.278m max x 2.625m max
(14' max x 8' 7" max)

Bedroom 2:
2.9m max x 3.605m max
(9' 6" max x 11' 9" max)

Type P Apartment

3

Kitchen/Diner/Living room:
6.181m max x 3.677m max
(20' 3" max x 12' max)

Bedroom 1:
2.804m max x 3.719m max
(9' 2" max x 12' 2" max)

Bedroom 2:
2.745m max x 2.475m max
(9' max x 8' 1" max)

Type S Apartment

11

Kitchen/Diner/Living room:
6.177m max x 4.005m max
(20' 3" max x 13' 1" max)

Bedroom 1:
3.973m max x 3.217m
(13' max x 10' 6")

Bedroom 2:
3.02m max x 2.77m max
(9' 10" max x 9' 1" max)

Type V Apartment

10

Kitchen/Diner/Living room:
6.171m max x 4.805m max
(20' 2" max x 15' 9" max)

Bedroom:
3.112m max x 3.452m max
(10' 2" max x 11' 3" max)

Type W Apartment

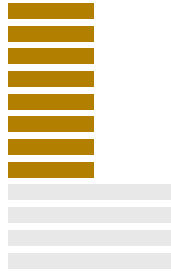
18

Kitchen/Diner/Living room:
6.839m max x 3.386m max
(22' 5" max x 11' 1" max)

Bedroom:
3.756m max x 4.996m max
(12' 3" max x 16' 4" max)

The Bluebell

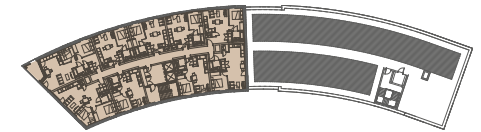
Floors 4 - 11



Please note that all plot numbers are applicable across floors 4-11



The right side of the block is a roof terrace which holds no apartments



Type C Apartment

4, 5, 6

Kitchen/Diner/Living room:
5.312m max x 3.946m max
(17' 5" max x 12' 11" max)

Bedroom:
4.077m x 2.254m
(13' 4" x 7' 4")

Type M Apartment

1, 9

Kitchen/Diner/Living room:
6.836m max x 3.064m max
(22' 5" max x 10' max)

Bedroom:
3.754m max x 2.609m
(12' 3" max x 8' 6")

Type O Apartment

2

Kitchen/Diner/Living room:
5.999m max x 5.448m max
(19' 8" max x 17' 10" max)

Bedroom 1:
4.278m max x 2.625m max
(14' max x 8' 7" max)

Bedroom 2:
2.9m max x 3.605m max
(9' 6" max x 11' 9" max)

Type P Apartment

3

Kitchen/Diner/Living room:
6.181m max x 3.677m max
(20' 3" max x 12' max)

Bedroom 1:
2.804m max x 3.719m max
(9' 2" max x 12' 2" max)

Bedroom 2:
2.745m max x 2.475m max
(9' max x 8' 1" max)

Type R Apartment

8

Kitchen/Diner/Living room:
8.349m max x 3.384m max
(27' 4" max x 11' 1" max)

Bedroom:
3.483m max x 2.985m
(11' 5" max x 9' 9")

Type Q Apartment

7

Kitchen/Diner/Living room:
5.314m max x 3.615m
(17' 5" max x 11' 10")

Bedroom:
2.779m max x 3.772m max
(9' 1" max x 12' 4" max)




Belgrave
Village

Concierge



Quality spec comes as standard

The Belgrave Village specification is a mix of contemporary styling and ergonomic design.

Our hand-selected fixtures and fittings have been tried and tested in our other recent developments. Our main objective is always to balance function and energy efficiency with good design and premium quality.

Kitchen

- White gloss fitted, handleless kitchen by HATT or equal approved
- Single oven, cooker hood, ceramic hob, microwave, integrated dishwasher, integrated washer dryer and free-standing white fridge freezer by Zanussi or equal approved
- 28mm worktops with 100mm upstand

Bathrooms

- Contemporary style bathroom suite by Geberit or equal approved comprising of back to wall toilet with concealed cistern, vanity sink unit and combined shower mix over bath
- Wall tiling 200mm x 100mm brick white splashback to basin with full height tiling to shower area
- Contemporary style brassware by Bristan or equal approved

Bedrooms

- All bedrooms to be fitted with carpet where applicable
- Sliding mirrored wardrobes where applicable

Lighting

- Down lights to kitchen area and bathrooms
- Pendant lighting to bedrooms, lounge and dining area where applicable

Internal details

- 94mm x 15mm skirting in white matt
- 69mm x 18mm architrave in white matt
- Walls to be plasterboard, finished in single-coloured emulsion (walls) and white emulsion (ceiling)

Heating

- Electric heating - panel heaters by Dimplex or similar
- Heated towel rails by Towelrads or equally approved

Flooring

- Luxury vinyl tile LVT flooring to bathrooms, lounge, kitchen and apartment entrance
- Carpets to all bedrooms

Windows

- Double-glazed windows - anthracite grey







Belgrave Village, kitchen





Belgrave Village, master bedroom



Belgrave Village, bedroom 2



-  The Blossom
-  The Bluebell

Belgrave Village Sitemap





OVER THE LAST 15 YEARS WAVENSMERE HOMES, GALLIARD HOMES & APSLEY HOUSE CAPITAL HAVE BEEN VERY PRIVILEGED AND PROUD TO HAVE DELIVERED OVER 800 APARTMENTS AND HOMES IN SOME OF THE MOST BEAUTIFUL AND HISTORIC LOCATIONS ACROSS THE UK.

DEVELOPED BY



All images, illustrations, floor plans and specifications are for indicative purposes only and are subject to change.

BELGRAVEVILLAGE.CO.UK



[BELGRAVEVILLAGE.CO.UK](https://belgravevillage.co.uk)

